

Introduction to the Amito Reading Data Centre



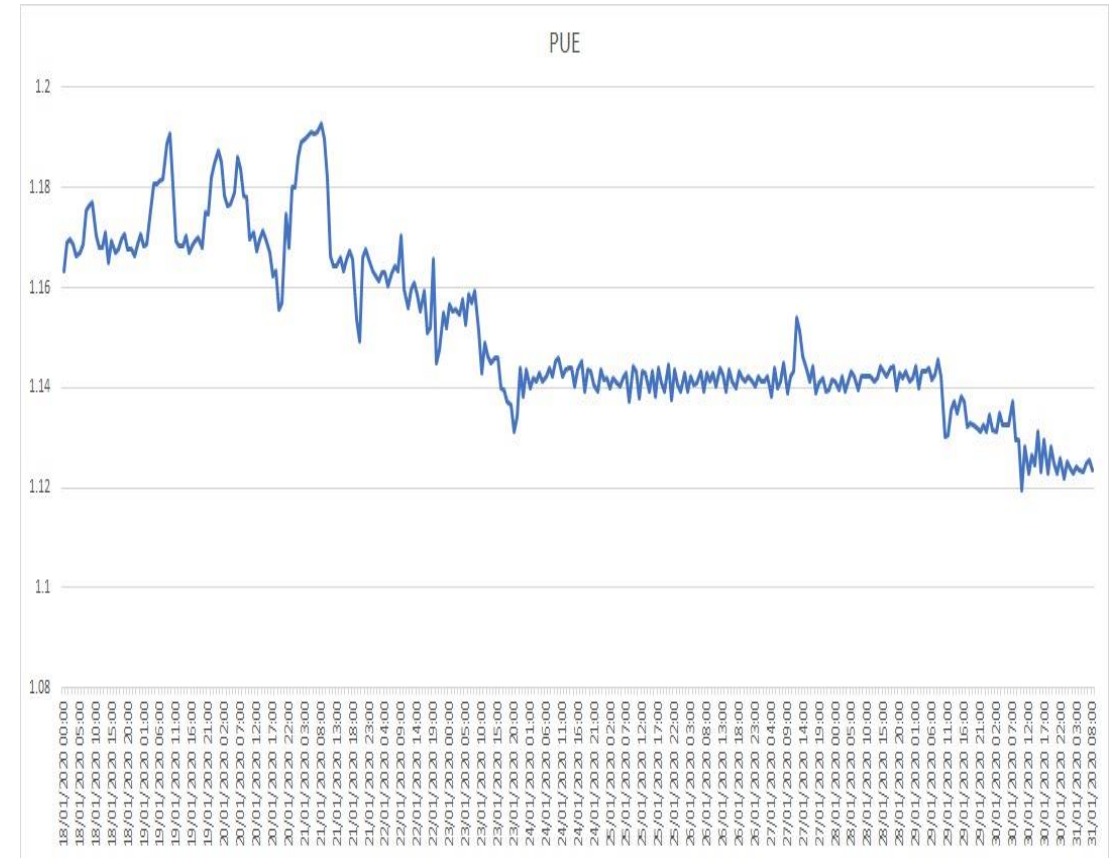


Introduction to the Amito Reading Data Centre

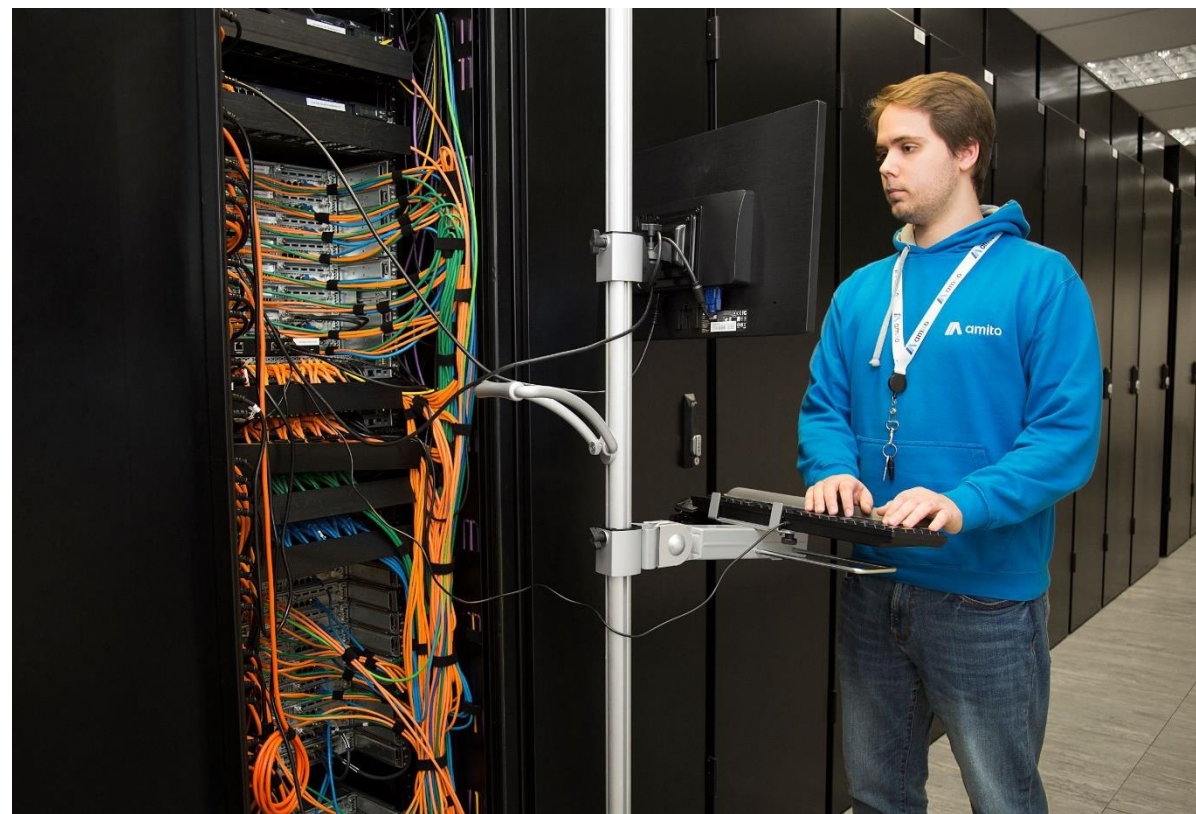
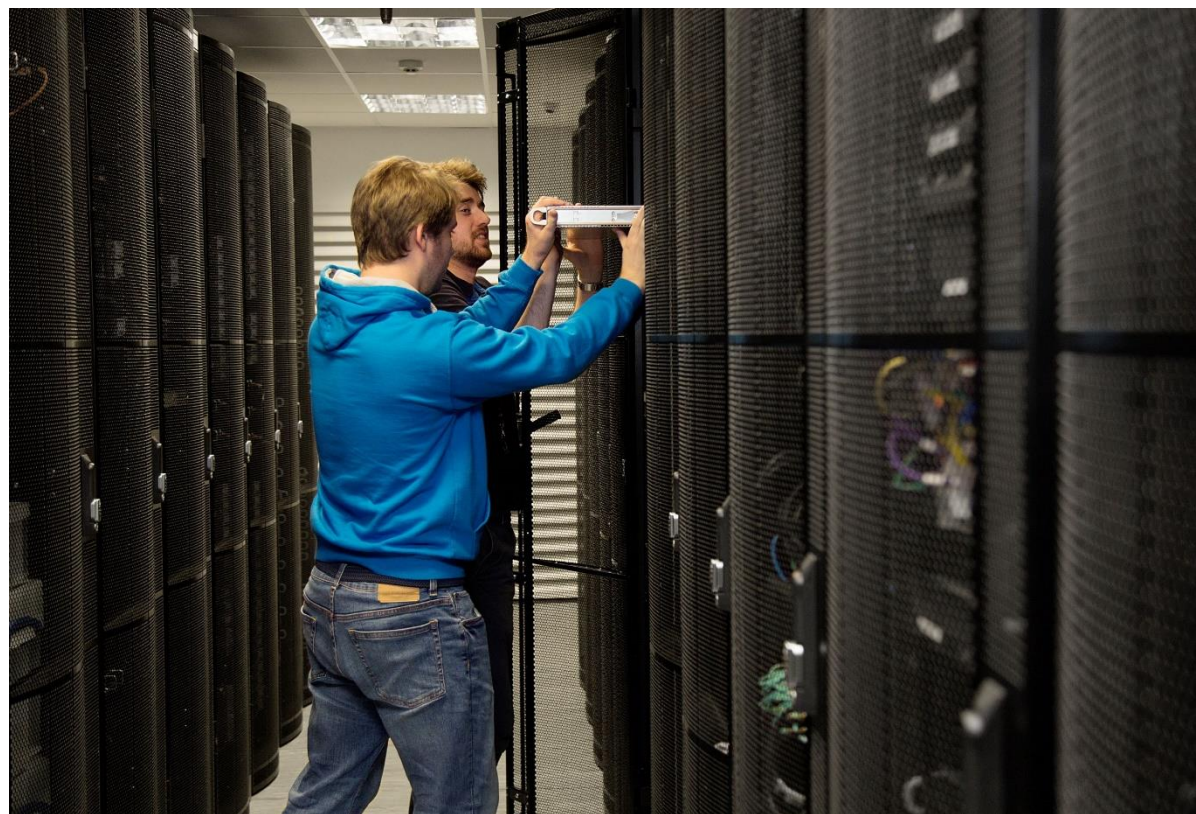
- Opened in 2013, freehold under the same ownership as Amito
- 1000 rack capacity, four live data halls, 400, 200, 200, 100 cabinets in each
- 5th hall available for expansion
- Design capacity 3.6kW cabinet, able to support power densities to 15kW per rack
- 2N electrical provision to each rack
- Mechanical plant (cooling) N+1
- PUE as low as 1.12 following recent UPS replacement project
- Designed to exceed Tier 3 availability

Low PUE underpins the value proposition

- Designed to industry-leading 1.20 PUE
- Recent UPS replacement drives PUE lower
- Now 1.12
- Saves 100,000kg CO2 per annum



Onsite support capability makes the difference at Amito



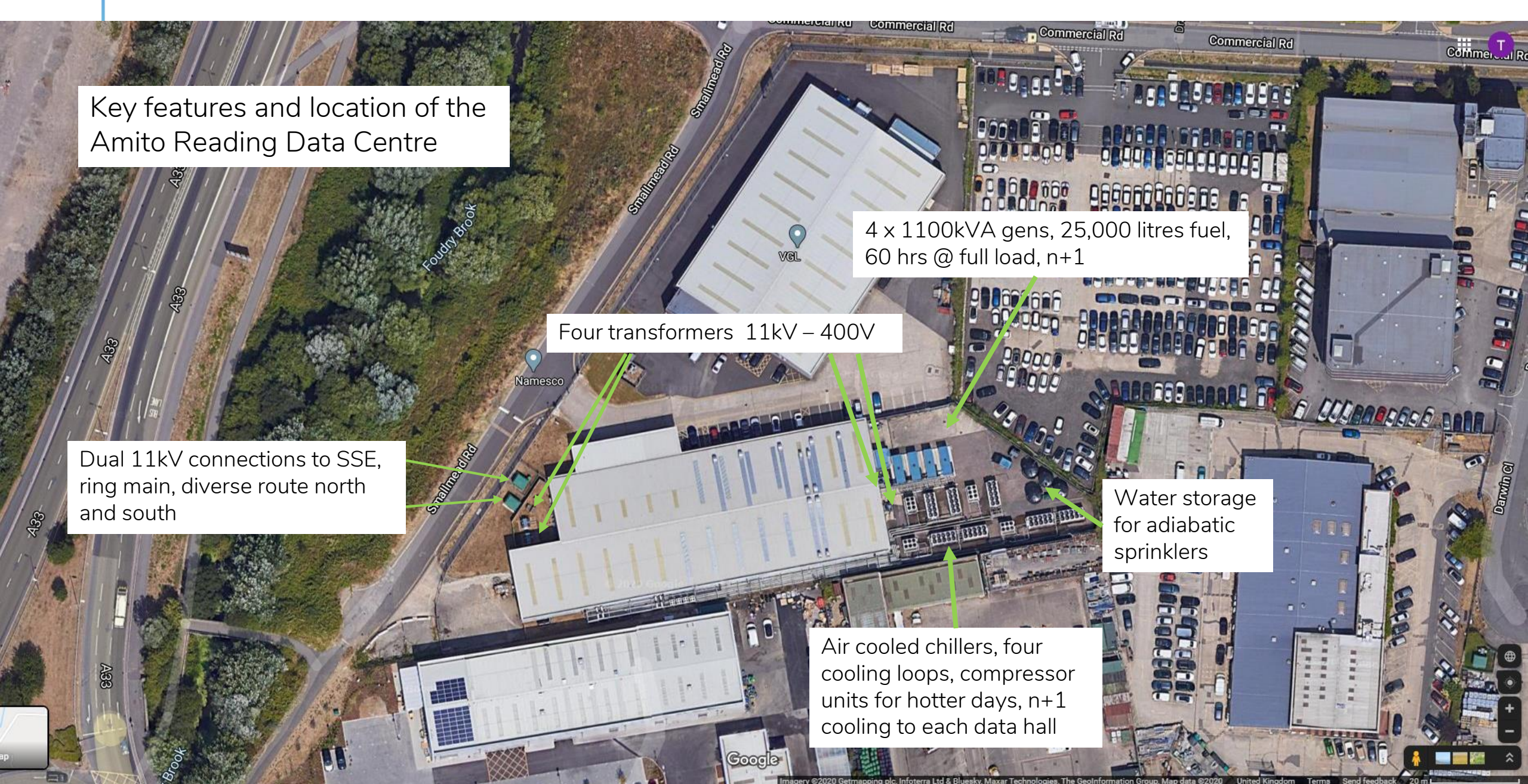
“Intelligent” onsite hands, same team supports Amito IaaS as well as colocation

Amito Reading Data Centre location
Junction 11, M4 - 1 mile to the south



Docklands – 50 miles, Slough – 20 miles

Key features and location of the Amito Reading Data Centre



4 x 1100kVA gens, 25,000 litres fuel,
60 hrs @ full load, n+1

Four transformers 11kV - 400V

Dual 11kV connections to SSE,
ring main, diverse route north
and south

Water storage
for adiabatic
sprinklers

Air cooled chillers, four
cooling loops, compressor
units for hotter days, n+1
cooling to each data hall

Amito Reading

Service corridor outside of data halls



Main switchgear



4 x 255kW CRACS for DH2 (N+1), A+B PDU's, dual power to each rack, IG55 fire suppression

Amito Reading

4 x 1100kVA generators (room for 2 more when needed)



200 rack Data Hall 2 now fully occupied.



Amito Reading



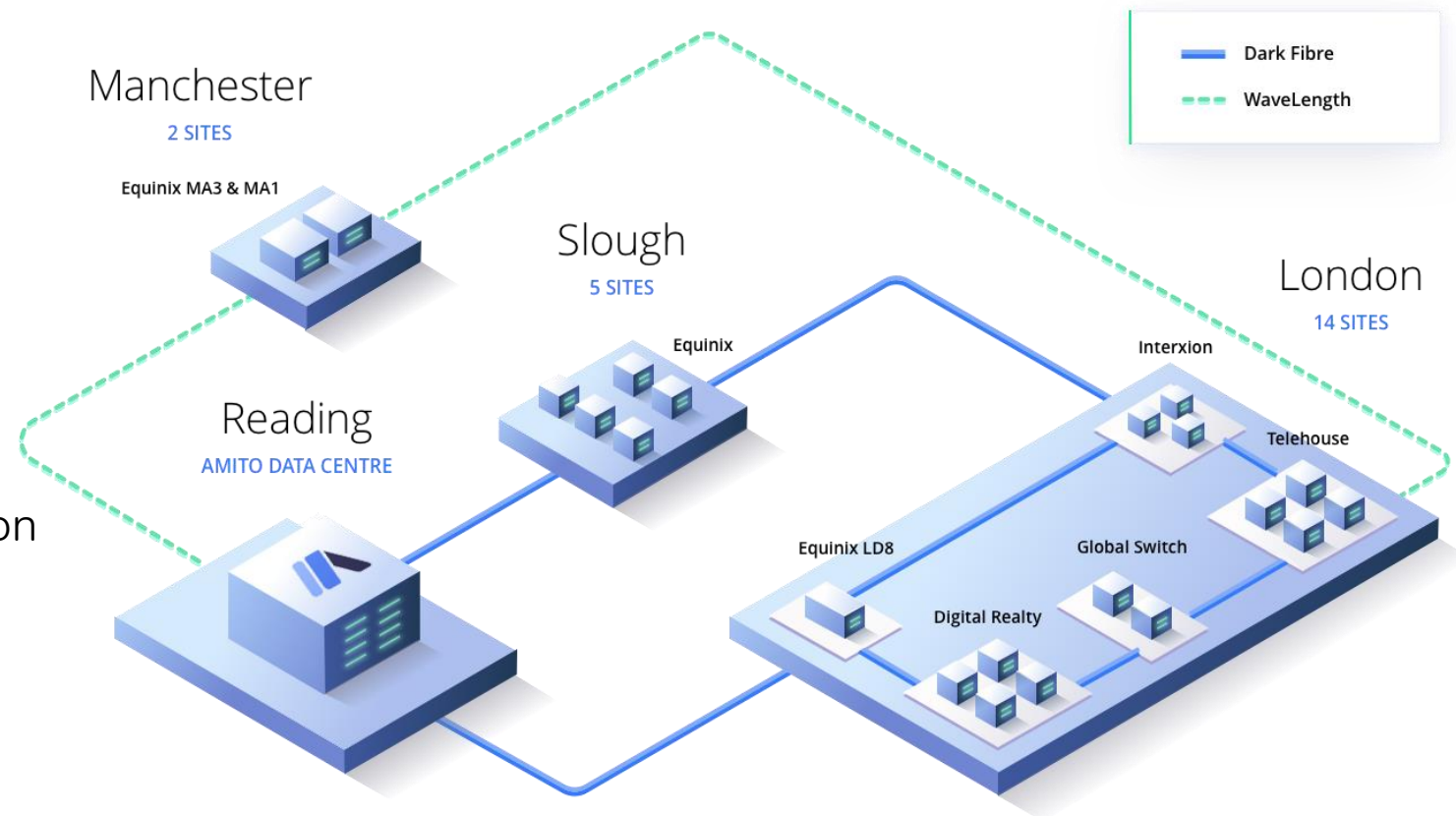
Data Hall 3 (also 200 racks) currently 50% occupied and is where we put new full racks in 2020.

Note air vent from CRACs on right, the room is the cold aisle, contained hot aisle model.

Return hot air plenum in the ceiling above. Blanking plates ensure separation of cold/hot air.

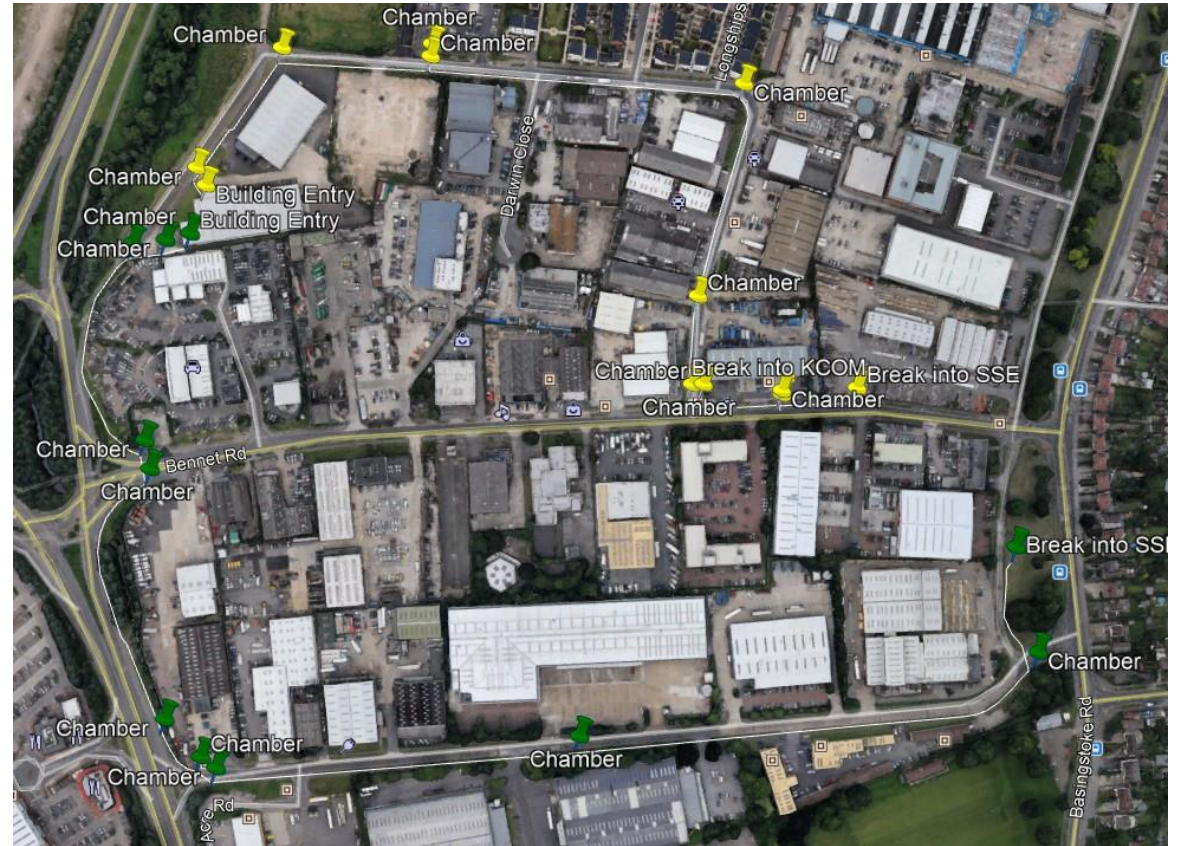
Amito Reading Network - Self-lit dark fibre ring gives unlimited capacity

- Diverse dark fibre ring to Telehouse Docklands
- North leg via Equinix Slough, KCOM/Cityfibre to LD5 then euNetworks to Interxion
- South leg on SSE fibre to Telehouse North
- euNetworks ring in central London
- Services:
 - Waves @ 100G, 40G and 10G
 - Pseudowires @ 1G
 - Internet



Amito Reading Network - Pre-built diverse duct routes available

- North and south routes
- Amito Reading Onsite carriers:
 - Openreach
 - COLT
 - Virgin
 - SSE
 - KCOM/Cityfibre
 - Vodafone/C+W



Amito Reading Colocation Options

- Secure, dedicated caged spaces 50kW +
- Dedicated “pods” – 10-20 racks or more
- Individual racks
 - 47U x 600mm wide x 1070mm deep
 - 3kW up to 7kW as standard (12-32Amps)
 - Up to 15kW with 3-phase power or additional 32Amps sockets
- Part racks
 - ½ racks inc 4 or 8 Amps
 - ¼ racks inc 4 Amps
- All Amito Colocation packages include:
 - Dual power bars A+B
 - 100Mbps via 2 x 1Gbs ports as standard
 - Superb onsite support (don't visit – open a ticket)!
 - 24x7 access



Amito customer portal

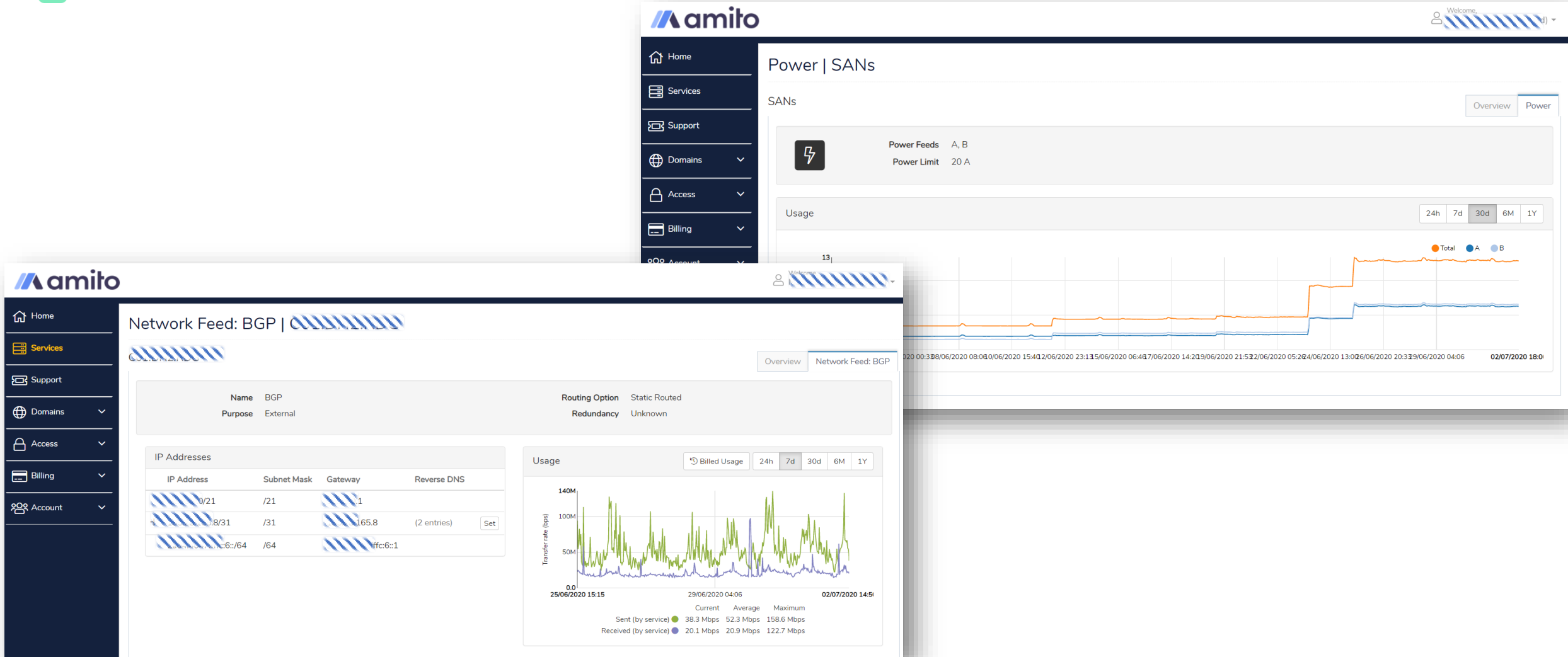
Enables our customers to:

- Set permission levels for their team
- Arrange site visits and check access logs
- View all their services in one place
- Review and open support tickets
- Book remote hands
- Manage invoices and payments
- Monitor bandwidth and power usage via straightforward graphs

Enables us to:

- Integrate every system including finance, support, network control, building management and M&E systems.
- Easily monitor and manage every aspect—from contracting to cloud orchestration to ticketing.
- Automate routine tasks such as making requested changes to cloud servers or handling access control. This helps us run a really lean operation.

Amito customer portal



Amito Reading - 100% SLA

- Based on:
 - Dual power to every cabinet
 - Dual network hand-off
- Accreditations: ISO27001 and others



Any questions?

0118 380 0599 | info@amito.com | www.amito.com

